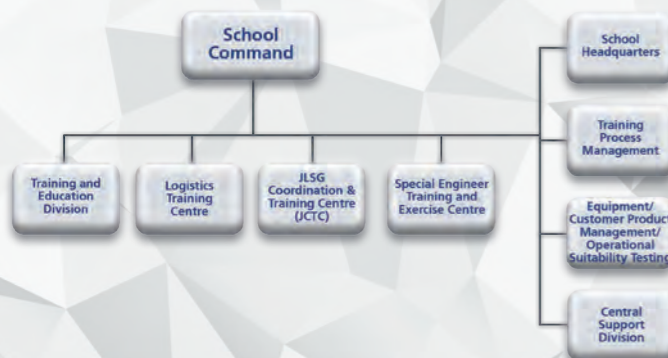


## STRUCTURE AND DATA



The above school structure includes military and civilian personnel serving at the garrisons of Garlstedt, Plön, and Putlos. Together, they handle the following annual training volume:



## IMPRINT

Published by:  
Logistikschule der Bundeswehr  
Informations-, Presse und Öffentlichkeitsarbeit

Lucius D. Clay-Kaserne  
Bremerhavener Heerstr. 10  
27711 Osterholz-Scharmbeck

Telephone: +49 4795 94 - 18800  
E-mail: [logsbwproea@bundeswehr.org](mailto:logsbwproea@bundeswehr.org)

[www.logistikschule.bundeswehr.de](http://www.logistikschule.bundeswehr.de)

Release date: July 2024



## Bundeswehr Logistics School



## COMMAND AND MISSION



The Bundeswehr Logistics School has been under the command of Brigadier General Holger Draber since 23 February 2023. As the Commander, he is responsible for the routine duty and training operation of the Bundeswehr's largest training facility. The Logistics School's main location is Garlstedt in the District of Osterholz, Lower Saxony.

As the Bundeswehr's central logistic training facility, the Bundeswehr Logistics School's tasks are to:

- Provide basic, advanced, and follow-on training for the Bundeswehr's logistics and automotive command, specialist, and administrative personnel;
- Prepare logistic forces for operations with a focus on national and collective defence;
- Coordinate and conduct individual and collective multinational logistic command and control training courses and provide proficiency training for German and multinational personnel;
- Provide basic, advanced, and follow-on training for Bundeswehr experts, examiners, and driving instructors;
- Provide dangerous goods affairs training;
- Conduct tactical and logistic operational suitability testing of Bundeswehr land systems within the scope of the CPM Procedure for the determination and meeting of the Bundeswehr demand for products and services in the area of responsibility of the Federal Ministry of Defence;
- Conduct course-based and post-related training of the Bundeswehr special engineer forces;
- Provide training facilities and special infrastructure for the specialist training of special engineers, and for the fuel supply-related training elements for the specialist training of terminal operations and transportation forces.

Other tasks include the conduct of expert meetings, information events and seminars for agencies of the Bundeswehr and other federal and state authorities.



## EDUCATION AND TRAINING DIVISION



The Education and Training Division is at the heart of course-based training. It comprises the Education and Training Branch with its pool of special instructors, and the Training Wings A, B, and C with a total of 14 student companies.

Education and Training offers different seminars and training courses of varying lengths to provide military and civilian personnel from organizational elements throughout the Bundeswehr and members of other nations' armed forces with basic and advanced knowledge and skills in a wide variety of logistic tasks. Modern technologies such as virtualization, gamification, and digital training platforms help exploit the potentials of competency-based and action-oriented predeployment training.

Training Wing A consists of five student companies stationed in Garlstedt. Among other tasks, Training Wing A is responsible for the probationary officer candidate course for supply and transport personnel, and the logistics command courses for recently graduated officers, battalion commanders and agency heads.



The focus of Training Wing B is on providing basic and follow-on training in materiel management, the special logistic task of subsistence, and the military postal service. Courses are open to all Bundeswehr services, and trainees are organized in four student companies in Garlstedt and one student company in Plön.

Training Wing C has four student companies in Garlstedt. One of its main tasks is the provision of basic, advanced and follow-on training for automotive command, specialist, and administrative personnel employed in the Bundeswehr's motor vehicle affairs sector. Training Wing C is also the central provider of training on dangerous goods, cargo securing, recovery training involving protected wheeled vehicles and armoured recovery vehicles, and also multiplier training with ground conveyors, materiel handling equipment, and heavy equipment transporters.



## LOGISTICS TRAINING CENTRE

Since its founding in 2006, the Logistics Training Centre has stood for the training and maintenance of logistical associations from all organizational areas, as well as the preparation of logistical management and specialist staff for their upcoming deployment. The aim is to prepare the Bundeswehr's logisticians in the best possible way through system-based action training to provide coherent, operational and cold-start logistical support from a logistics network in the operational area (LogNw i.E.) and in the entire range of tasks of the Bundeswehr.



The structure of the Logistics Training Centre is based on the logistic business processes of "Logistic Command and Control", "Maintenance and Production", "Materiel Management", and "Movement and Transport".



# Log**b**Z

We. Train. Logistics.

Exercise participants have the opportunity to efficiently practice the elements of several command posts simultaneously without much additional effort in a comprehensive training environment.

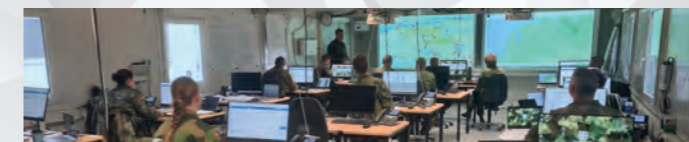
## JOINT LOGISTIC SUPPORT GROUP COORDINATION AND TRAINING CENTRE

Within the context of implementing the Framework Nations Concept Cluster Logistics adopted by NATO member states, the Joint Logistic Support Group Coordination and Training Centre (JCTC) was established in October 2017. Accredited by NATO as a training facility in 2019, the JCTC acts as a training installation for NATO's logistic personnel. This includes individual training in the fundamentals of NATO logistics or relevant IT applications (LOGFAS) as well as collective training for NATO logistic staffs known as Joint Logistic Support Groups (JLSG).



The JCTC comprises four sections to accomplish these tasks. The Training and Exercise Section is responsible for organizing and conducting individual training. It supports the JLSGs in planning, organizing, and conducting collective training and exercise projects as required. For these exercise projects, the JCTC provides a training and exercise command post as a platform for NATO staffs to practice and consolidate their processes in a mission-oriented environment.

The training and exercise command post is operated and maintained by the HQ Support Section. In the future, the command post is intended to be connected to what is known as NATO Red Network, which will allow processing sensitive data.



The Concept and Doctrine Section contributes to developing and processing procedures and regulations governing and describing NATO logistics as tasked by superior agencies.

The JCTC Personnel Section is responsible for managing the "Joint Personnel Augmentation Pool". This pool includes national personnel from all services and major organizational elements as well as equivalent NATO personnel available to reinforce a JLSG, if required.

## SPECIALIST ENGINEER TRAINING AND EXERCISE CENTRE

The Specialist Engineer Training and Exercise Centre (SETEC) was established as the successor to the Pipeline Engineer Training Centre in Putlos (Oldenburg in Holstein), and was placed under the command of the Bundeswehr Logistics School as an autonomous agency on 1 October 2006.



Its primary mission is to conduct course-based specialist training for Bundeswehr specialist engineer officers, non-commissioned officers, and enlisted personnel at the training location Putlos. The Specialist Engineer Training and Exercise Centre Putlos also provides proficiency training for troops tasked with constructing and/or ensuring the smooth operation of camps and bulk fuel installations on operations.



At the Specialist Engineer Training and Exercise Centre, course participants are trained on the same major engineer equipment types that are used in theater.

The centre provides both holistic and specialist training. Advanced training courses and familiarization courses introducing specialists to new equipment are offered in the fields of HVAC (heating, ventilation, and air conditioning), auxiliary power units, POL (petroleum, oils, and lubricants), and electrical and mechanical engineering.



The special infrastructure pipeline training facility is the only of its kind in Europe filled with real fuels. This enables trainees to apply and practice their skills under live conditions. Training is conducted on modular bulk fuel installations with capacities ranging from 150 m<sup>3</sup> to 1,200 m<sup>3</sup>, sections of static pipeline systems, and the associated mobile back-up systems.